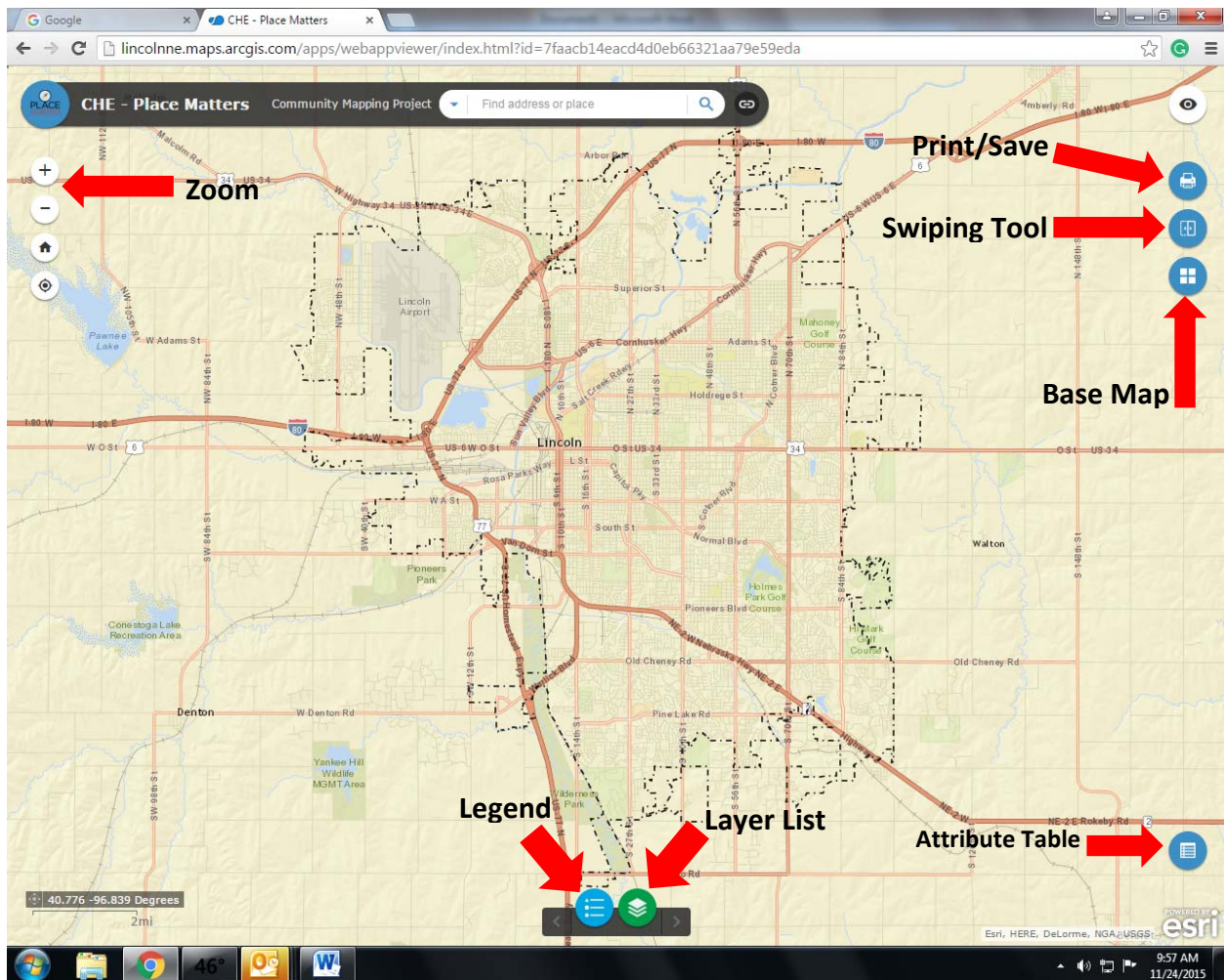




How to Use the Place Matters Online Mapping Tool

When you open the Place Matters Mapping Tool, you should see a map that looks something like this: (If you don't see this, you may need to reset the base maps. See instructions to do that [here](#).) To zoom in or out on the map, use the + and – symbols in the upper left corner of the map. If you have a wheel mouse, you can roll the wheel forward and backward to zoom in and out.



Opening Layers

Each health factor is represented by a layer on the map. You can select and compare layers from the “Layer List.” Click the green button at the bottom of the screen open the Layer List. When you click the button, a Layer List box will pop up on the screen. You can move the Layer List around on the screen by moving your cursor to the black bar at the top of the list. Your cursor will turn into a 4-directional arrow; click and hold to move the Layer List. A key to all the factors on the Layer List appears at the end of these instructions.

Select a layer by clicking in the box to the left of the layer name. The box will turn blue and a white check will appear in the box if the layer is selected.

In addition to the layers you select, we recommend you leave these 2 layers on continuously:

- CTLim2015 – City Limits 2015
- Excluded Census Tracts

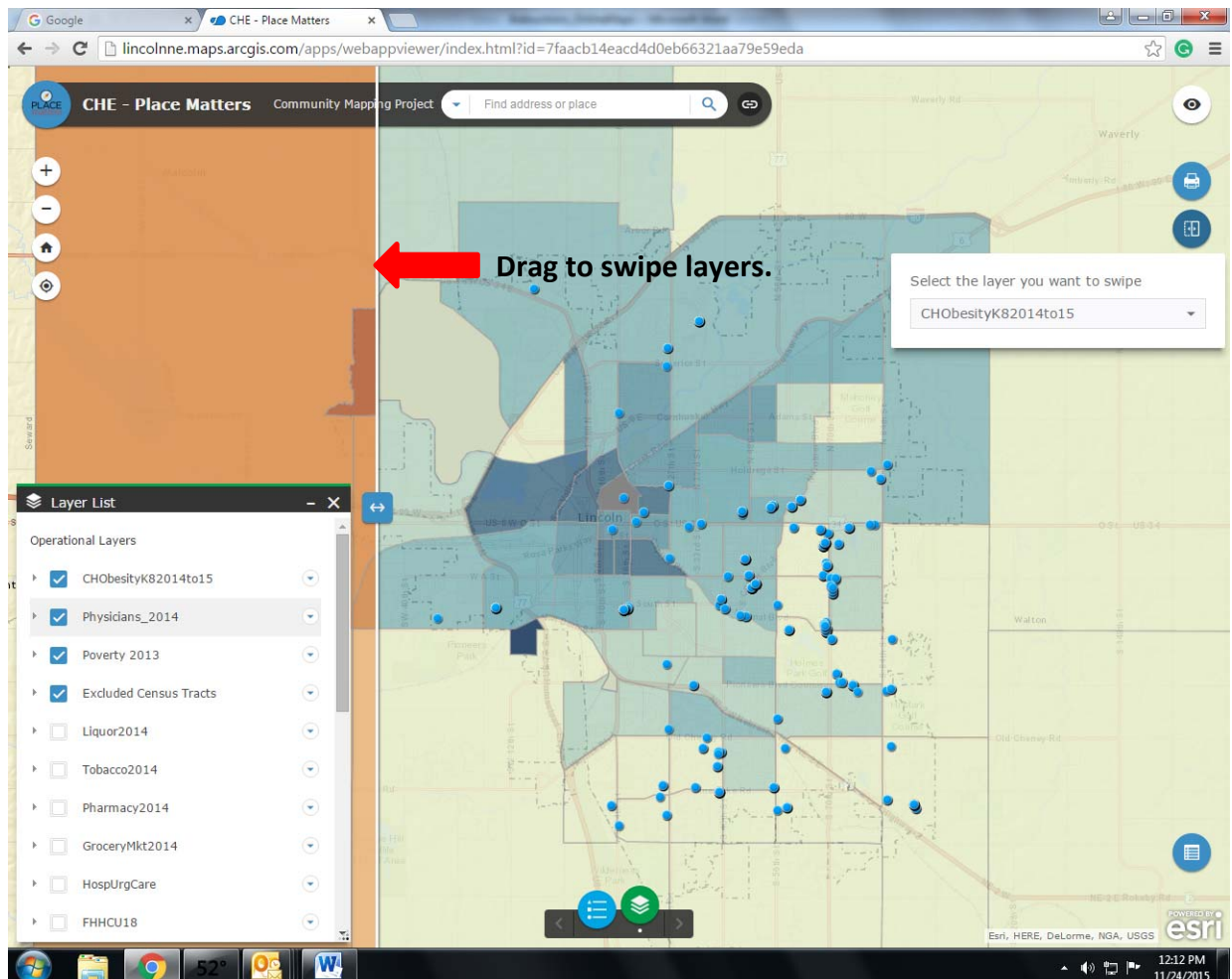
Every layer you check will appear on the map. To maintain clarity of the maps, select only 2 or 3 layers at a time (in addition to the City Limits and Excluded Census Tract layers). Some of the layers, such as Physicians and Grocery/Markets are point maps and show individual locations.

To see what the different colors on a map signify, click on the name of the layer. A list will appear below the layer label. Click on the layer label again to close the list. You can also click on the blue button at the bottom of the screen to open a separate “Legend” pop up. On the pop up menu, select the grey arrow to the left of each layer to see the symbol being used for that layer. To hide it, select the arrow again.

Swiping Layers

To see one layer at a time or see how two layers are related, use the Swiping Tool.

To open the Swiping Tool, click on the middle of the three blue buttons on the upper right side of the screen. When you click on the Swiping Tool, a dialogue box will ask which layer you want to swipe from the list of layers you have selected. Click on the arrow on the right side of that box to reveal a drop down menu of all the layers you have selected. Click on the layer you want to swipe. This action turns off that layer. All the other layers you have selected remain visible on the screen.



Hold your cursor anywhere on the vertical white bar on the left side of the screen. The cursor will become a 2-directional arrow. Click and hold, then drag the white bar across the screen to display the layer you chose to swipe.

For the maximum effect, the layer you choose to swipe should be above the other layers on the Layer List. To move items up or down on the Layer List, click on the arrow to the right of the layer label and select "Move Up" or "Move Down." You can only move an item one position at a time. To close the swiping tool, select the blue swipe tool button again. This function applies to all features within this application. If you wish to exit a feature, simply undo the original action.

Changing the Base Map

The program defaults to a street map as the base map. To change the base map, select the third blue button on the upper right side of the screen to open a gallery of base maps available. If you change the base map, please change it back to "Streets" before you exit the Place Matters Online Mapping Tool.

Printing/Saving

If you would like to save a map you've created, click the top blue button in the upper right corner to open a Print dialogue box. Give the map a short, descriptive title in the "Map Title" box. Select the paper size and orientation using the "Layout" drop-down menu. "Letter ANSI A" is 8 ½ x 11. Choose the file type using the "Format" drop-down menu. The system defaults to .pdf. When you've made your selections, click on the "Print" button and your map will be added to a numbered list of maps within that dialogue box. Click on the item to open it and save it to your computer. Once you've saved the maps you'd like to save, use the "Clear Prints" button to delete your maps before you exit the Place Matters Online Mapping Tool.

Individual Census Tract Information

There are two ways to find information for a specific census tract.

1. Click on the census tract on the map. A dialogue box showing the specific data for that census tract for the layers you have selected will pop up. Use the right and left arrows in the blue bar at the top of the box to show the information for each of the layers you have selected.
2. Click on the blue "Attribute Table" button in the lower right corner of the map. This will open a table at the bottom of the screen that includes all the data for each factor. Use the right and left arrows on either side of the screen to scroll through the factors. Click on any factor to see the data for that factor. The census tract number will be listed on the left side of the table. A map of Lancaster County with census tract numbers identified is available here:

<http://lincoln.ne.gov/city/plan/reports/census2010/10ct.pdf>

Questions?

Contact Marcia White, Program Manager, Community Health Endowment of Lincoln, marcia.white@chelincoln.org, (402) 436-5516.



Key to Layer List Labels and Abbreviations

- 10+ Prenatal Visits 2011-13** –percentage of pregnant women who had ten or more visits for prenatal care. *Data Source: Lincoln-Lancaster County Health Department.*
- Asthma per CT 2011-13** – percentage of the population per census tract with a diagnosis of asthma. Data source: Lancaster County BRFSS 2011-2013, HDE, Lincoln Lancaster County Health Department
- Bachelors** – percentage of the population whose highest level of educational attainment is a Bachelor's Degree. *Data source: U.S. Census Bureau.*
- CHObesityK82014to15** – percentage of children in grades kindergarten through 8th grade who are obese. Obesity is defined as a Body Mass Index (BMI) at or above the 95th percentile for children of the same age and sex. *Data source: Lincoln Public Schools.*
- City Limits 1980** –boundaries of the City of Lincoln in 1980. *Data Source: City of Lincoln Planning Department.*
- CtLim2015** –boundaries of the City of Lincoln in 2015. *Data Source: City of Lincoln Planning Department.*
- Excluded Census Tracts** – census tracts whose data were not included in the calculations or plotting for the Plate Matters project. This project excluded the Lincoln Municipal Airport, the University of Nebraska-Lincoln City Campus, the Lincoln Regional Center and the Nebraska State Penitentiary.
- FHHCU18** – Female-Headed Households with Children Under 18 years of age. *Data source: U.S. Census Bureau.*
- First Trimester Care 2011-2013** –percentage of pregnant women who received prenatal care during their first trimester. *Data Source: Lincoln-Lancaster County Health Department.*
- GroceryMkt2014** – (Point Map) locations of grocery stores and grocery stores within a larger store. *Data Source: Lincoln Lancaster County Health Department.*
- HospUrgCare** – (Point Map) locations of hospitals and urgent care clinics in the city. *Data Source: Lincoln Lancaster County Health Department.*
- Lancaster County – Lincoln Boundary Cutout** – *Data Source: City of Lincoln Planning Department.*
- Less than HS** – percentage of the population who have not completed high school or its equivalency. *Data source: U.S. Census Bureau.*
- Life Expectancy 2011-13** –number of years left for person born today based on the death rates with in individual age groups in a particular geographic area. *Data Source: Vital Statistics, HDE, Lincoln Lancaster County Health Department*
- Liquor2014** – (Point Map) locations of establishments licensed to sell beer, wine or alcohol. *Data Source: Lincoln-Lancaster County Health Department.*
- Obesity 2013** –percentage of adults who reported that they are obese. *Data Source: Behavioral Risk Factor Surveillance Survey.*
- Pharmacy2014** – (Point Map) locations of licensed pharmacies. *Data Source: Lincoln-Lancaster County Health Department.*
- Physicians2014** – (Point Map) locations of primary care and internal medicine practices. *Data Source: Lincoln-Lancaster County Health Department.*
- Poverty 1980** – percentage of residents living in poverty. *Data source: U.S. Census Bureau.*
- Poverty2013** – percentage of residents living in poverty. *Data source: U.S. Census Bureau.*
- Smoking 2011-2013** – percentage of adults who reported that they smoke. *Data source: Behavioral Risk Factor Surveillance Survey.*
- SomeCollorAssoc** – percentage of the population who have attended some college or earned an Associate's Degree as their highest level of education. *Data source: U.S. Census Bureau.*
- Tobacco2014** – (Point Map) locations of establishments licensed to sell tobacco. *Data Source: Lincoln-Lancaster County Health Department.*